



2ND QUARTER 2016 | VOL 13



# GLOBAL INVESTING FOR GUARANTEED DIVIDENDS

An African proverb says, "If we educate a boy, we educate one person. If we educate a girl, we educate a family—and a whole nation." When we send a girl to school, she is far more likely to ensure that her children also receive an education. Hence, investing in a girl's education is investing in a nation. Moreover, educated women have a greater chance of escaping poverty, leading healthier and more productive lives, and raising the standard of living in their homes and their communities. It is vital to invest in educating girls and women around the world! Your investment is guaranteed to pay great dividends!

*Linda Koh*

Director, GC Children's Ministries

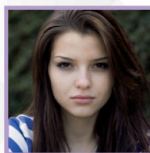
## YOU ARE MAKING THE WORLD

# Better!

YOU are making the world—and our church—better, one woman at a time. Or actually, **22 women** at a time. That's the number awarded tuition help at the July Scholarship Committee. Added to those from the February committee, together we have empowered **98 women in 2016**, providing \$54,910 towards their education.

Among the July group there were 6 from Bolivia, 9 from Ghana, and 7 from other countries. The group includes 2 taking Midwifery, 2 studying Systems Engineering, and 3 preparing to become teachers.

### THESE WOMEN ARE TRULY OUTSTANDING—AND TRULY NEEDY.



Those who know **Rita**, a Midwifery student, say, "She stands out from all the rest." But Rita receives very little help from her parents because her father, a cocoa farmer, harvests only 4 bags of cocoa annually. With 9 family members, this means finances are tight.

### WITH ENTHUSIASM



**Ruth**, an education major in Bolivia, is a single mother with a little girl. Although she struggles financially and has endured many adversities, her teachers say, "She takes on challenges with enthusiasm."



**Christiana** is a nursing student in Ghana. She was president of the Student Council and is active in Youth Ministry. "Despite her financial challenges, I know her to be one of the best," says a teacher. "She's very determined, intelligent, and emotionally stable."

That is just a sample of the talented women helped with scholarships in July.

### GOOD-BYE TO TWO

During the committee, we said good-bye to two members who have served for several years, Susanna Schulz and Odette Ferreira. We will miss their wholehearted support of the women's scholarship program.

Perhaps Odette spoke for the group when she said, "This committee does some of the most important work in this [GC] building."

[NEWS BITES]

130

TOTAL COUNTRIES HELPED



3

PALLETS OF USED BOOKS COLLECTED FOR BOOK SALE

\$85,000

NEEDED TO CONTINUE SAME LEVEL OF SUPPORT IN 2017



"She has beautiful virtues that make her a successful leader."

(Said of Yolanda of Bolivia)

SCHOLARSHIP FOR EGYPT:

\$335



[MEET OUR SISTERS]



## ← FINDING LOVE AT CAMP

Chin Chin came to know Jesus at a youth evangelism camp and was baptized after studying the Bible for a year. Raised in a Bhuddhist family, she didn't learn of God's mercy; now she embraces Jesus for His great love. She says, "My husband is the one who invited me to the youth camp. He has

been my spiritual partner and teacher since then."

### A BUSY LIFE

As the mother of two, a pastor's wife and partner in ministry, she has been active in all aspects of the church, and ministers in a Chinese church on Sabbath afternoons. Chin Chin speaks three languages and was a high-achieving student at Taiwan Adventist College. Now she plans to earn a Master's in Education at

Allias in the Philippines. Her desire is to teach in Taiwan, China, or anywhere she is led.

### WILL HER DREAM END?

But there are financial problems. Their savings are nearly gone, and they have a daughter in academy. Her husband's subsidy covers only their living expenses. Without financial assistance she cannot complete the education needed to serve in the Adventist teaching ministry.



## ← BONBONS AND HONEY FOR COLLEGE

"She is a young woman with potential who can become a great leader," says her school principal at Northeast Brazil Adventist College. Already Clevia has shown leadership in her

community as an energetic volunteer in church and school programs.

### HELP, A LOAN, AND ENTERPRISE

Clevia's father, a small farmer, can provide very little towards her tuition. Last year she was able to attend only because of scholarship help and a loan from a relative. To earn

a little, she works selling bonbons and honey.

### THE GOAL

With a GCWM scholarship, she can return for her last year, graduate with her degree in Business Administration, find a job, and pay off her school loan to her relative. She sends her thanks to you, our donors, for making this possible.

## DO YOUR FRIENDS KNOW?

Do they know the tremendous impact of SOS, changing women's lives around the world?

### TELL THEM!

- Share this newsletter
- Ask us for more copies to share
- Share it with your on-line contacts

### Gifts of Remembrance

IN MEMORY	IN HONOR
Arline Dick	Jeane Jacobs
Nancy Glenn	SOS
Lourdes Reinert	Beth Wear
Charles West, Jr.	Ed & Sue Boyle
"my mother" <i>by Eliz. &amp; Patrick Lawrence</i>	



This newsletter is published quarterly by the General Conference of Seventh-day Adventists Women's Ministries Department to share news about the women's scholarship program.

You may contact the Editor by writing: General Conference of Seventh-day Adventists Department of Women's Ministries 12501 Old Columbia Pike, Silver Spring, MD - 20904 Phone: 301-680-6672 | Fax: 301-680-6600 E-mail: [womensministries@gc.adventist.org](mailto:womensministries@gc.adventist.org) Website: [adventistwomensministries.org](http://adventistwomensministries.org)

Editor: Raquel Arrais  
Assistant Editor: Carolyn Kujawa  
Graphic Designer: Erika Miike  
Contributors to this issue: Ella Rydzewski

Please make checks payable to **Women's Scholarship Fund.**

Mail to:  
Women's Ministries Department  
General Conference of  
Seventh-day Adventists  
12501 Old Columbia Pike  
Silver Spring, MD 20904

Donate on-line at  
[adventistwomensministries.org](http://adventistwomensministries.org)

Or call to charge to credit card:  
301-680-6608

Yes, I want to support the WM Scholarship program with ...  
 My pledge of \_\_\_\_\_ per (year/month)  My gift of \_\_\_\_\_  
(Please print all information)

Name \_\_\_\_\_  
 Address \_\_\_\_\_  
 Charge to my  MasterCard  VISA Card number \_\_\_\_\_ / \_\_\_\_\_ / \_\_\_\_\_  
 a monthly gift of \$ \_\_\_\_\_ on the 10th of each month beginning (month/year) \_\_\_\_\_ / \_\_\_\_\_  
 a one time gift of \$ \_\_\_\_\_ Signature \_\_\_\_\_  
 (Optional) This gift is in honor/memory of \_\_\_\_\_

## WHAT YOUR GIFT CAN DO

<b>\$30/month:</b> room & board, 1 semester THAILAND	<b>\$15/month:</b> 1 semester tuition BANGLADESH
<b>\$1,050:</b> scholarship - JAMAICA	<b>\$1,000:</b> 1 semester tuition RUSSIA
<b>\$160:</b> 1 month tuition ARGENTINA	